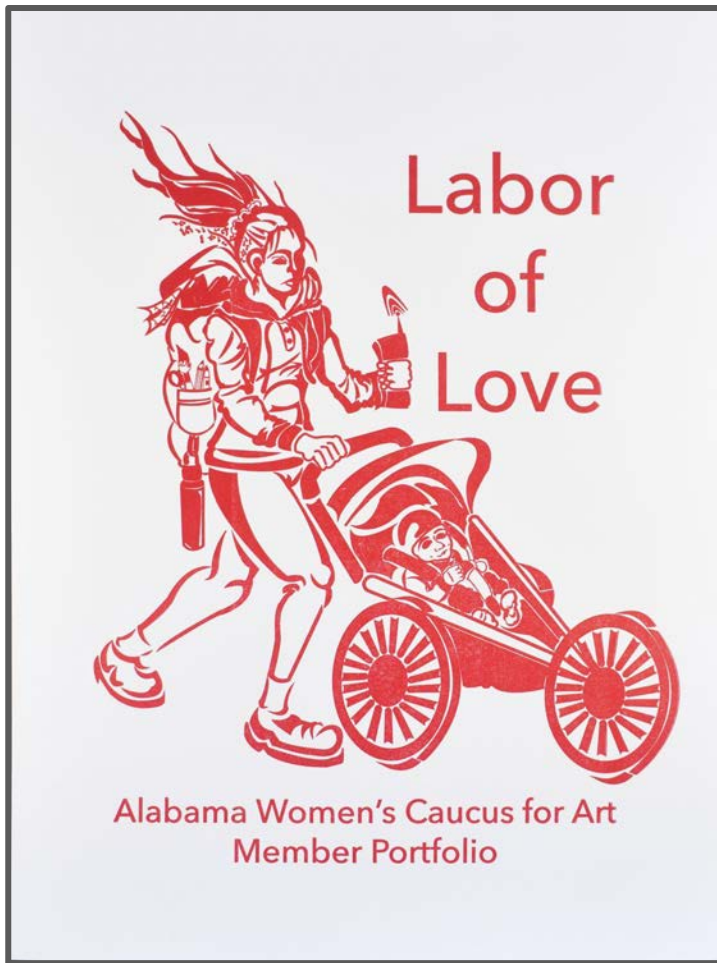




Alabama Women's Caucus for Art

Labor of Love
Member Portfolio
Spring 2022



Art - Jessica Nunno

Labor of Love

Traveling Exhibition & Installation
Juried in 2021

Organizers:
Sylvia Bowyer
Anna Sue Courtney
Jessica Nunno
Kimberly Hart



Labor of Love - Call for Entries

In the last 50 years, over 60% of American women have entered the job market. They hold less than 15% of top paying jobs and 62% of the minimum-wage jobs. 'Around the house' women do more than twice the work of men. This 'domestic' labor is still considered unimportant and not worthy of representation in our nation's Gross Domestic Product (GDP). Some GDP increases have occurred with women entering the job market. But men have not significantly entered the home labor market, this ongoing disparity has created a culture where many women now work two jobs.

The COVID-19 pandemic has adversely affected women's financial security in the workforce as well as increased their unpaid working hours. Because our market economy is organized around self-interest as its bottom line. Its methodology is based on developing and marketing products for consumption to individuals. Individuals who are defined almost solely by greed, personal interest, desire and insecurity.

What if we alter this old economic paradigm?

In many household's the person who cares for children, cooks, cleans and organizes supplies enables others to focus on school and paying jobs.

What if we re-defined economics as a discipline dedicated to people's well-being?

In this new method of calculating a country's wealth; could we include non-tangible goods like a homemade meal, child care, elder care, clean air, clean water, a safer non toxic environment and listening to others?



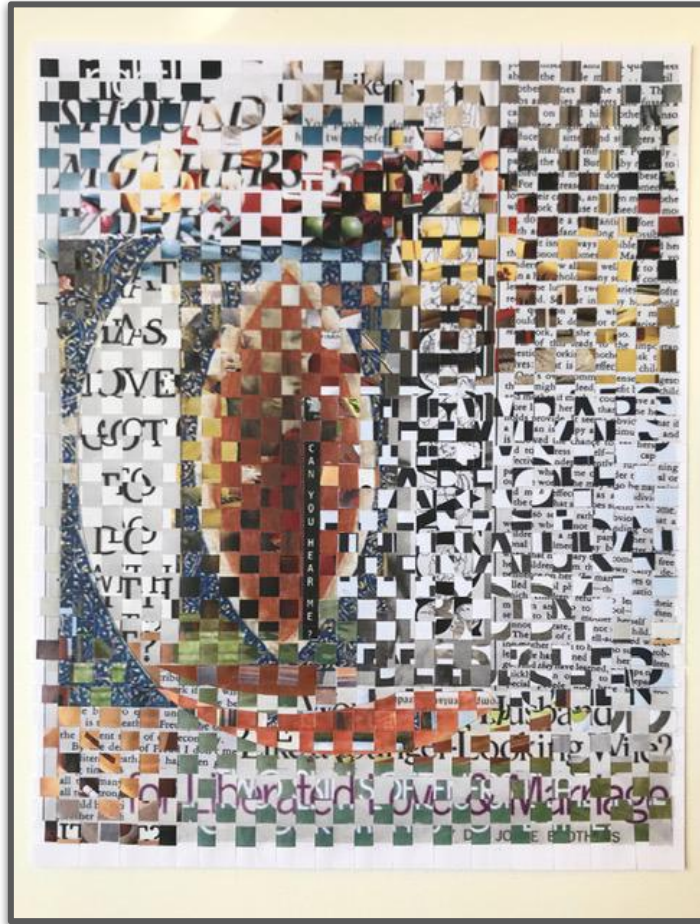
Clamshell - Sonja Rossow (center)
 Interior Art - Tired History - Beverly West Leach (left and right)



Shelter Installation - Anna Sue Courtney



Installation Variant - Anna Sue Courtney



The Market We've Made

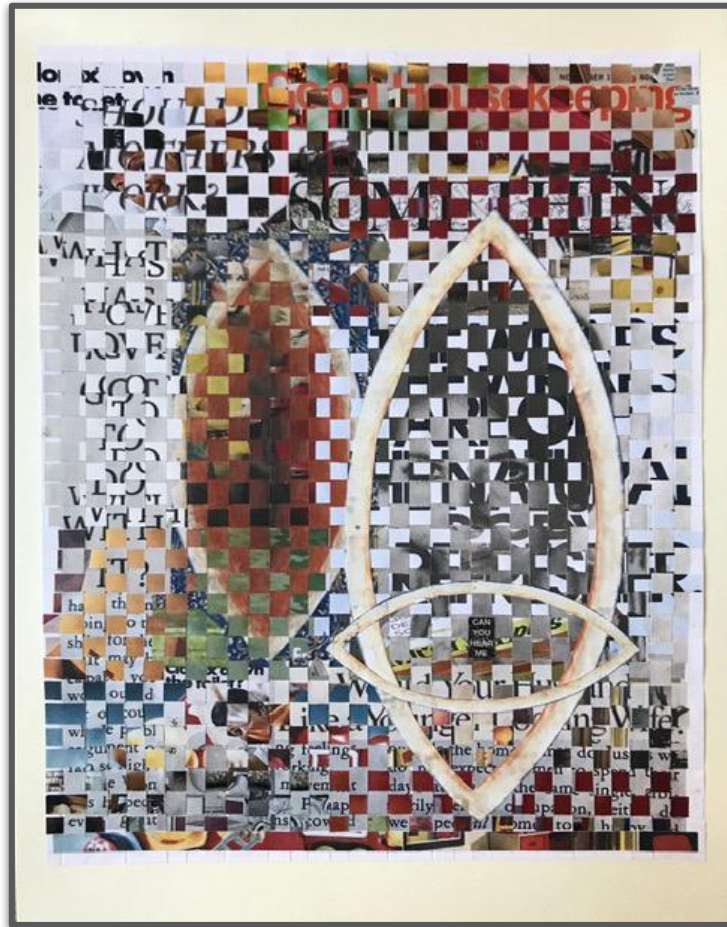
Sylvia Bowyer

Huntsville, AL

Artist's Statement

Color copy magazine images on acid free paper and glue.

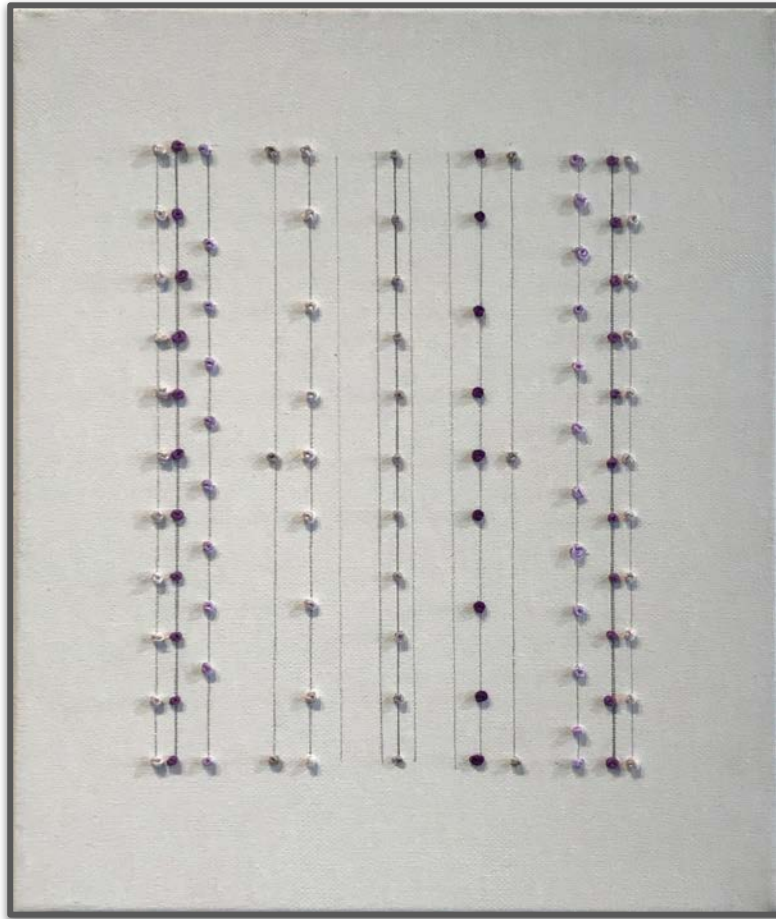
9 x 12 inches



Sylvia Bowyer
Huntsville, AL

Color copy magazine
images on acid free
paper and glue.

9 x 12 inches



Timeline 1

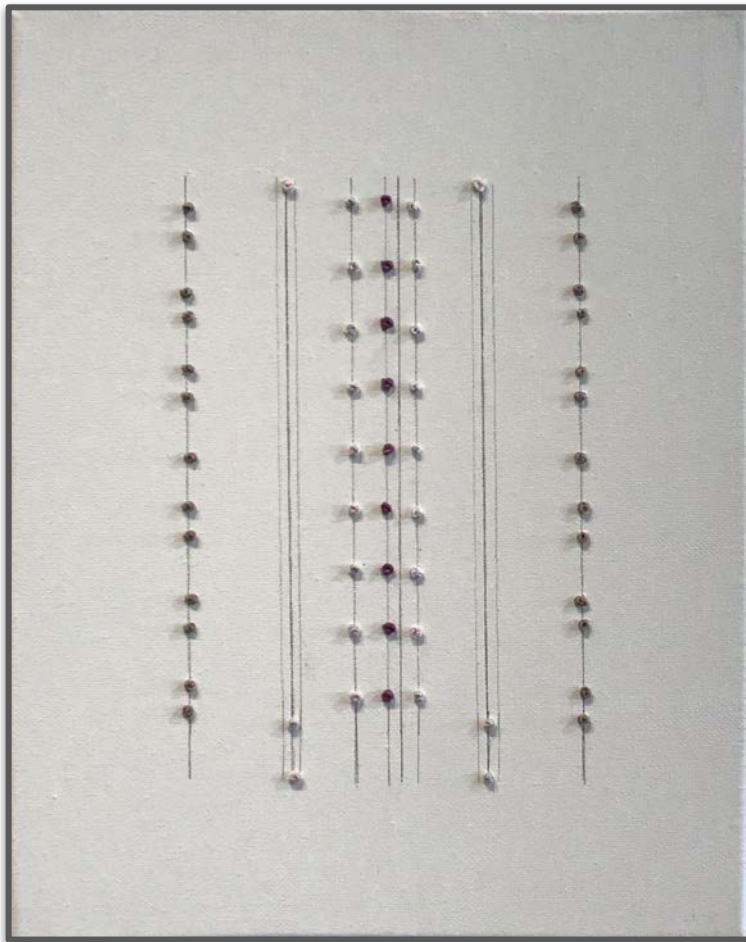
Patti B. Driscoll

Birmingham, AL

Artist's Statement

Cotton thread, graphite,
and canvas on paper

9 x 12 inches



Timeline 2

Patti B. Driscoll

Birmingham, AL

Cotton thread, graphite,
and canvas on paper

9 x 12 inches

Cynthia Wagner

Huntsville, AL

Artist's Statement

Digital Collage of found
images and original
photographs

Printed on Somerset Velvet
Paper

9 x 12 inches



Women Should Not



Alabama Women's Caucus for Art

Cynthia Wagner

Huntsville, AL



Personal Guest Room

Digital Collage of found
images and original
photographs

Printed on Somerset Velvet
Paper

9 x 12 inches



untitled

Rachel Lackey

Huntsville, AL

Artist's Statement

photography
9 x 12 inches



City

Susie Garrett

Huntsville, AL

Artist's Statement

colored pencil with small
and thin metal things.

9 x 12 inches



Woman, Child, Man

Kimberly Hart

Huntsville, AL

[Artist's Statement](#)

Fiber on paper
9 x 12 inches



June Cleaver Was A Myth

Beverly West Leach

Ozark, AL

Artist's Statement

Collage on gold paper, black ink, Arches Cream paper stock
9 x 12 inches

A composite image featuring a woman in a red dress and black heels, holding a large stack of money and a sign that reads "GODDAMN WORKING WOMEN NEED THE VOTE FOR EQUAL PAY FOR EQUAL WORK ALL LABORERS LEAD". The background is a collage of text about the gender pay gap and a black and white photo of a woman in a white uniform. The text "I'M SO TIRED OF THIS" is overlaid on the right side of the image.

9 x 12 inches



Work Life Balance

Mimi Boston

Birmingham, AL

[Artist's Statement](#)

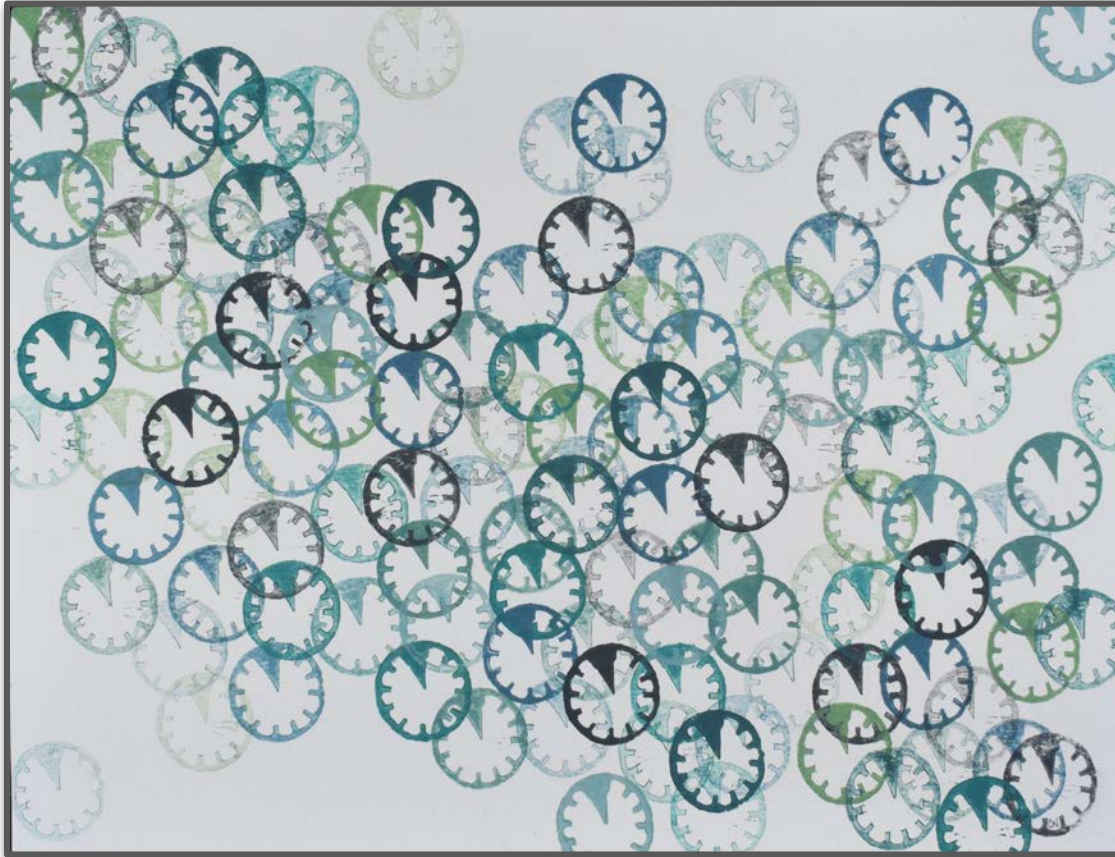
9 x 12 inches

Corinna Nicole

Harvest, AL

Artist's Statement

Linocut on paper
9 x 12 inches



Unpaid Timestamps



untitled

April Holridge
Dadeville, AL

Artist's Statement

9 x 12 inches



Double Day

Kami Watson

New Market, AL

Artist's Statement

Wool Fiber and Hand Dyed
Silk Fabric
9 x 10.5 inches

Hobb
easy in a
to world.
trilogies + future +
Mandy.
Start with
The beginning of a great

Breakfast in bed!

A new relationship is about to blossom

You will broaden your horizons this month

Music will play an important role in inspiring your creativity

You will have a great time

You will have a great time

You will have a great time

You will have a great time

Manda Banks

[illegible][illegible][illegible][illegible]



Time Layering 4

Sara Garden Armstrong

Birmingham, AL

Artist's Statement

Cotton paper, pigmented abaca fiber
9 x 12 inches



untitled

Heather Baumbach

Huntsville, AL

[Artist's Statement](#)

Fiber, thread on paper
9 x 12 inches



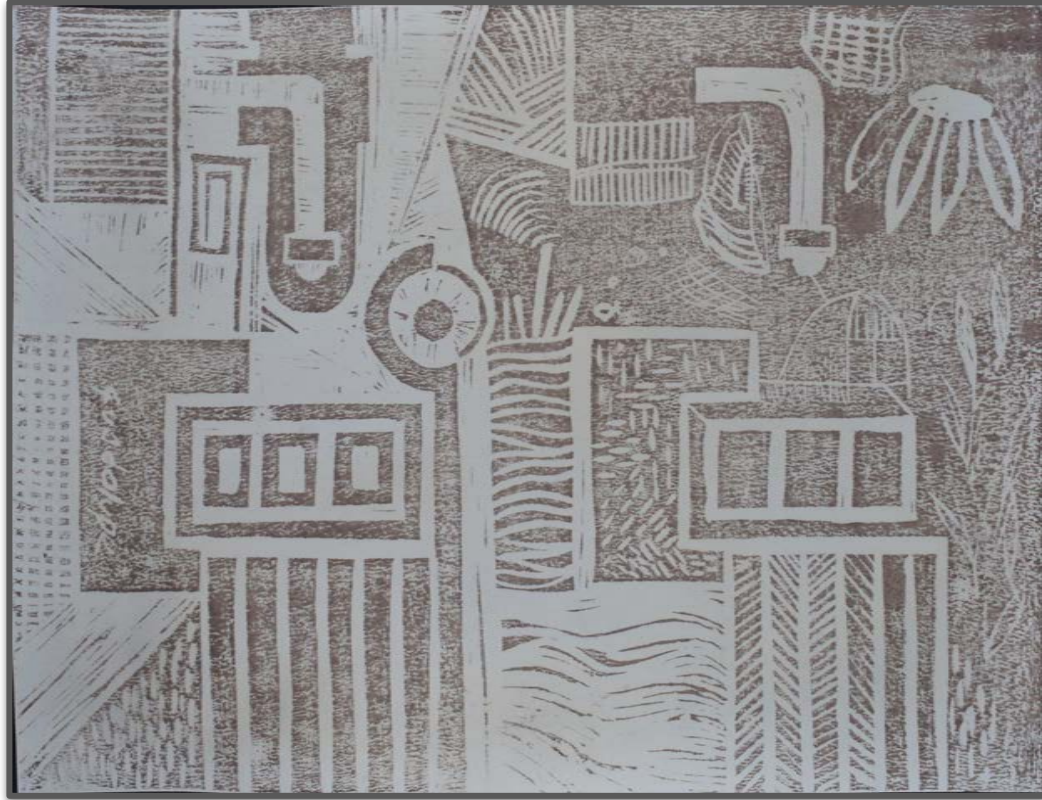
Gathering

Anna Sue Courtney

Huntsville, AL

Artist's Statement

Ink, transparency film, collage
9 x 12 inches



Untitled

Guadalupe Lanning Robinson

Huntsville, AL

[Artist's Statement](#)

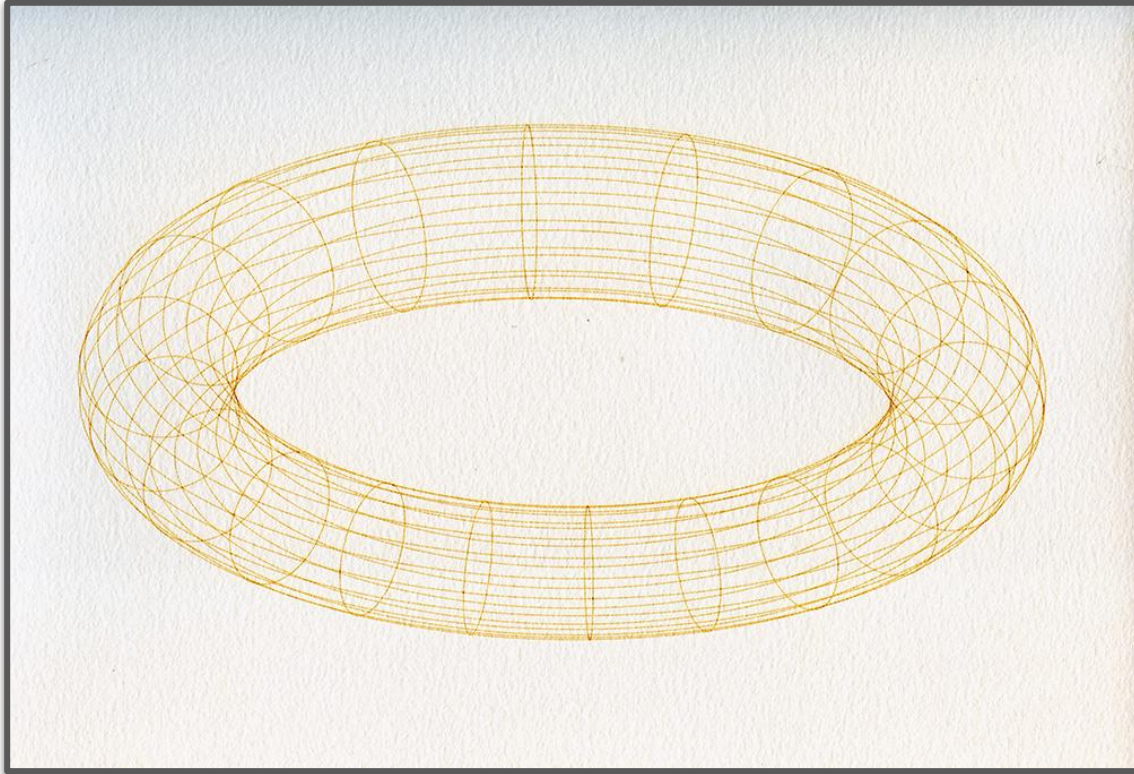
Red clay print on paper
9 x 12 inches

Elisabeth Pellathy

Birmingham, AL

Artist's Statement

140 lb. Canson watercolor
paper, Laser cut paper
3D projection of isometric
space
9 x 12 inches



Concentric, Isometric Worlds



Dog Love Part 1

Jessica Ann Nunno

Huntsville, AL

Artist Statement

Ink on paper
9 x 12 inches



Dog Love Part 2

Jessica Ann Nunno

Huntsville, AL

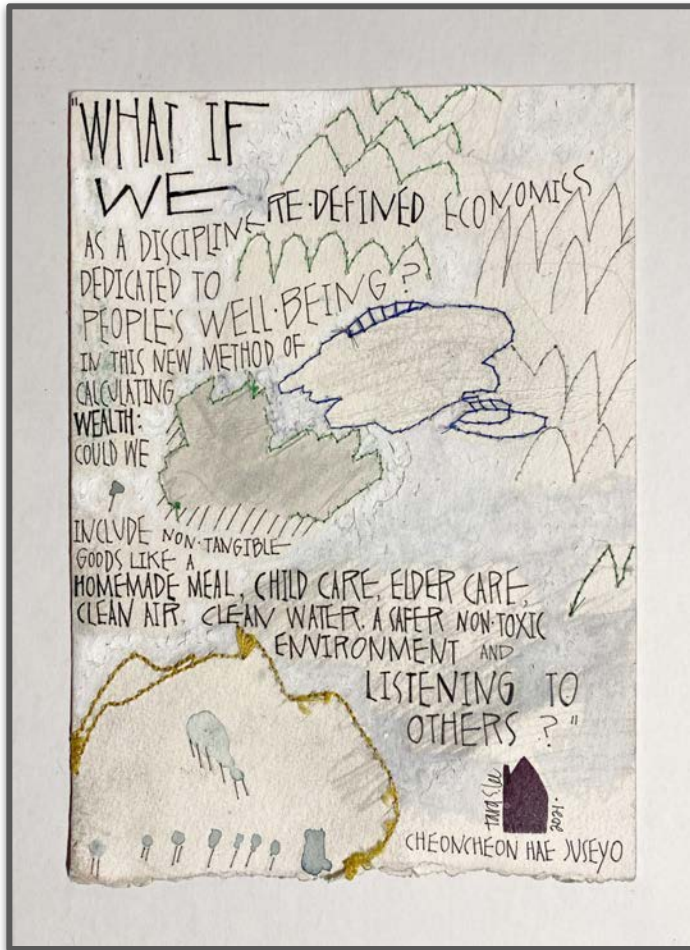
Ink on paper
9 x 12 inches

Tara Stallworth Lee

Birmingham, AL

Artist Statement

drawing paper, pencil, ink
pen, thread, posca pen
9 x 12 inches



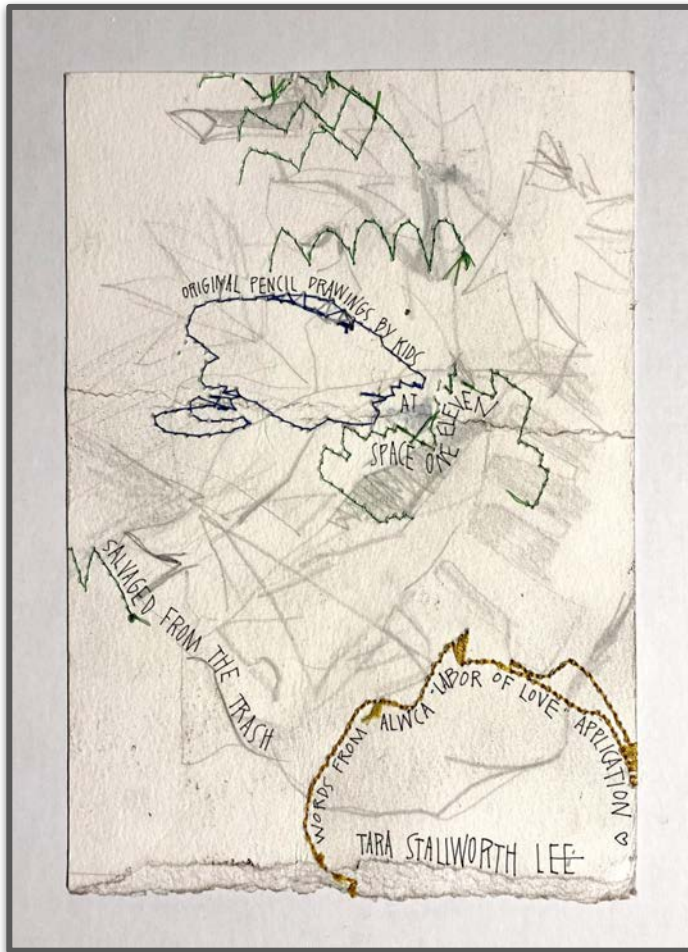
cheoncheoni hae juseyo (front)

Tara Stallworth Lee

Birmingham, AL

drawing paper, pencil, ink
pen, thread, posca pen

9 x 12 inches



cheoncheoni hae juseyo (back)



Sonya Rossow

Huntsville, AL

[Artist Statement](#)

Clamshell Box made by Sonja
Greentree Rossow of
Greentree Book and Paper

The Alabama Women's Caucus of Art (ALWCA)

The ALWCA's Labor of Love Folio pages represent an eclectic community of women artists and their interpretations of the struggles and balances of career and domestic labor disparities.

The Labor of Love pages are a mixed media dialogue in print, collage, photography, drawing, fiber and pastel. The arrangement of the folio pages for display can take multiple forms according to the specific site.

Founded in 2015, The ALWCA is a chapter of the National Women's Caucus of Art. Our mission is to promote women artists in the visual arts through education, community and social activism.



Clamshell Box made by Sonja Greentree Rossow of Greentree Book and Paper
Cover design by Jessica Ann Nunno – Freelance Illustrator and Art Teacher



Alabama Women's Caucus for Art

Labor of Love Artists

[Amanda Banks](#)

[Heather Baumbach](#)

[Sonya Rossow](#)

[Anna Sue Courtney](#)

[Jessica Ann Nunno](#)

[Susie Garrett](#)

[April Holdridge](#)

[Kami Watson](#)

[Sylvia Bowyer](#)

[Beverly West Leach](#)

[Kimberly Hart](#)

[Tara Stallworth Lee](#)

[Corinna Nicole](#)

[Mimi Boston](#)

[Cynthia Wagner](#)

[Patty B. Driscoll](#)

[Elisabeth Pellathy](#)

[Rachel Lackey](#)

[Guadalupe Lanning Robinson](#)

[Sarah Garden Armstrong](#)

Labor of Love Folio Exhibition Opportunities

The Labor of Love Folio can be presented alone or with additional hanging or sculptural works by page artists.

Exhibition of the book and pages can take multiple forms: gallery wall, pedestals, sculptural installation, or performance - depending on the specific site.

Presentation and education schedules can be short- or long-term events. Featured artists are available for lectures or workshops that highlight a specific medium as the pages represent a diversity of approaches.

For scheduling or more information, contact Anna Sue Courtney or Kimberly Hart at alabamawca@gmail.com